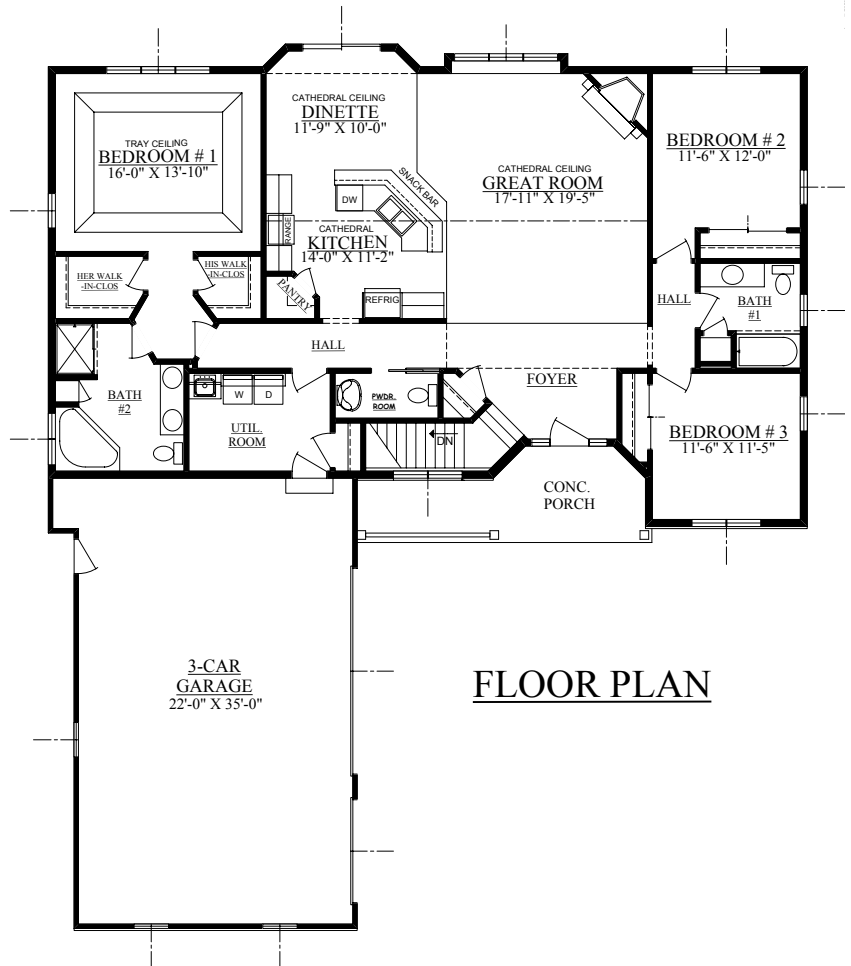




***The***  
***"Lakewood"***  
 - *Belle Chasse* -

*Living Space*  
**Total 1930 Sq. Ft.**  
*Overall Home Dimensions*  
 Width: 59'-0"  
 Depth: 68'-9"



**ideal**  
**HOMES**  
 INC.

*We Specialize in Custom Homes*  
[www.theidealhome.com](http://www.theidealhome.com)

© Copyright It is unlawful for anyone to use or copy these plans without the express written permission of Ideal Homes.

All dimensions are approximate, and are subject to change. Consult construction plans for complete dimensions. Illustrations shown may include optional features. Specifications subject to change without notice. Builder reserves the right to change specifications for the purpose of improving the product.



*Living Space*  
**Total 1930 Sq. Ft.**  
*Overall Home Dimensions*  
Width: 59'-0"  
Depth: 68'-9"

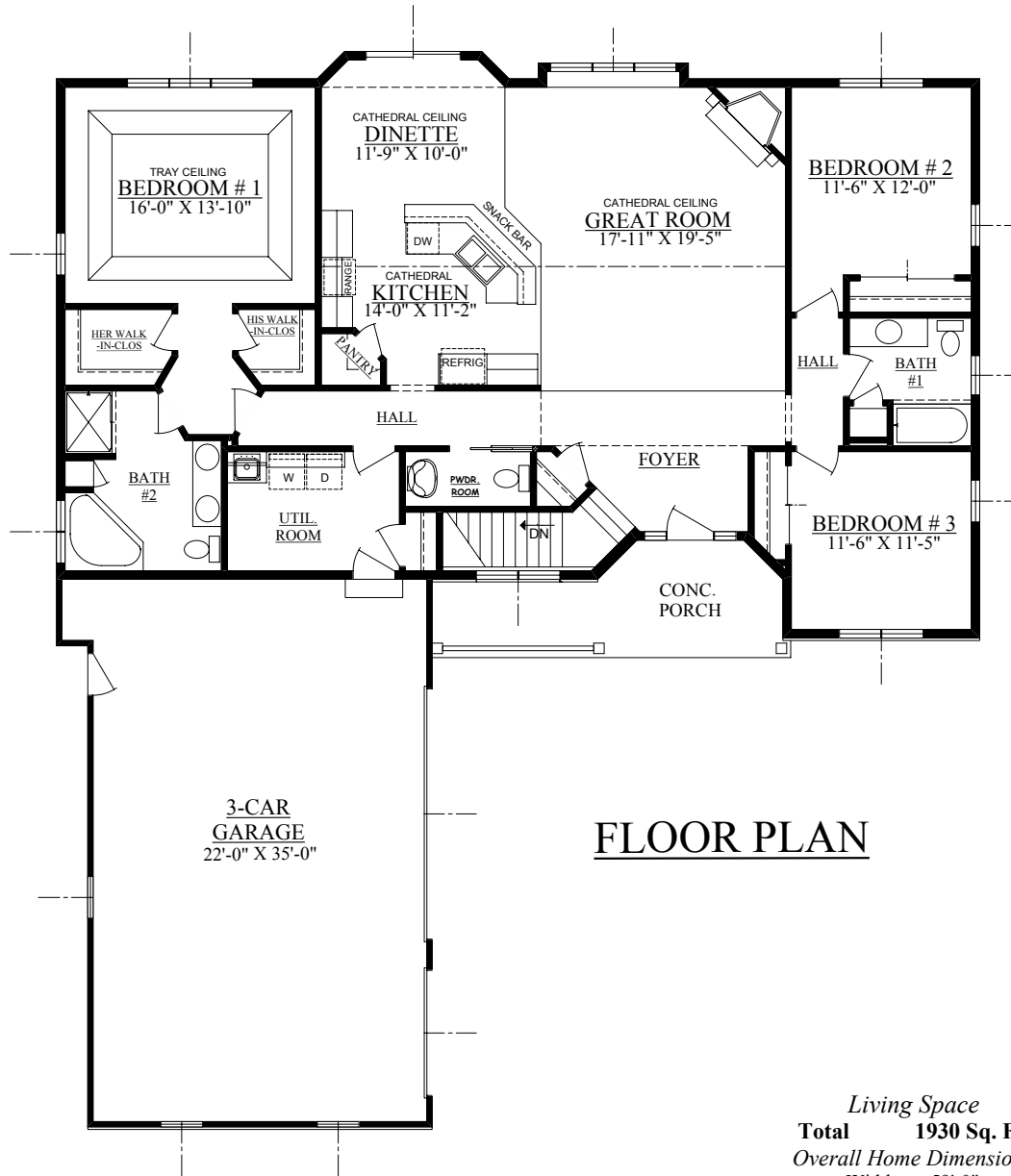
## ***The "Lakewood" - Belle Chasse -***

**ideal**  
**HOMES**  
**INC.**

*We Specialize in Custom Homes*  
[www.theidealhome.com](http://www.theidealhome.com)

© Copyright It is unlawful for anyone to use or copy these plans without the express written permission of Ideal Homes.

All dimensions are approximate, and are subject to change. Consult construction plans for complete dimensions. Illustrations shown may include optional features. Specifications subject to change without notice. Builder reserves the right to change specifications for the purpose of improving the product.



**FLOOR PLAN**

*Living Space*  
**Total 1930 Sq. Ft.**  
*Overall Home Dimensions*  
 Width: 59'-0"  
 Depth: 68'-9"

***The "Lakewood" - Belle Chasse -***

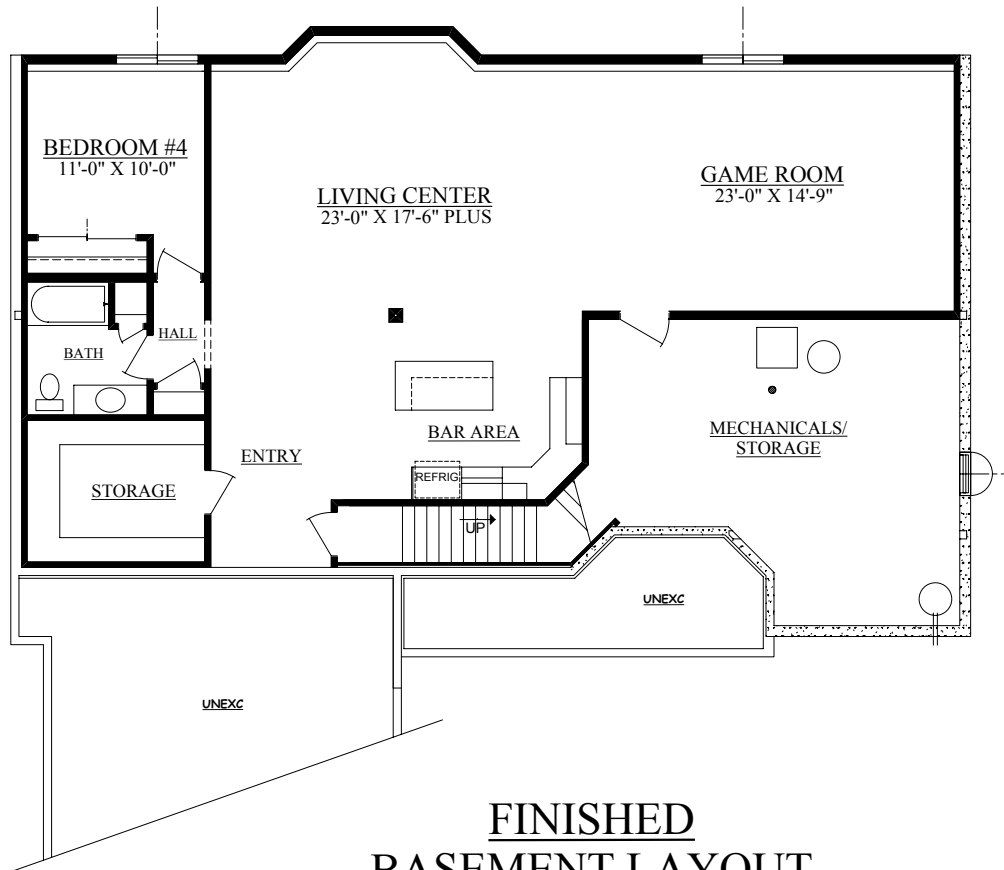
**ideal**  
**HOMES**  
 INC.

*We Specialize in Custom Homes*

[www.theidealhome.com](http://www.theidealhome.com)

© Copyright It is unlawful for anyone to use or copy these plans without the express written permission of Ideal Homes.

All dimensions are approximate, and are subject to change. Consult construction plans for complete dimensions. Illustrations shown may include optional features. Specifications subject to change without notice. Builder reserves the right to change specifications for the purpose of improving the product.



**FINISHED  
BASEMENT LAYOUT**

*Basement Living Space*  
**Total 1400 Sq. Ft.**

***The "Lakewood" - Belle Chasse -***

**ideal  
HOMES**  
INC.

*We Specialize in Custom Homes*

[www.theidealhome.com](http://www.theidealhome.com)

© Copyright It is unlawful for anyone to use or copy these plans without the express written permission of Ideal Homes.

All dimensions are approximate, and are subject to change. Consult construction plans for complete dimensions.

Illustrations shown may include optional features. Specifications subject to change without notice. Builder reserves the right to change specifications for the purpose of improving the product.